

液压翻转犁用液压部件  
Hydraulic reversible plough parts

阀 块  
Valves



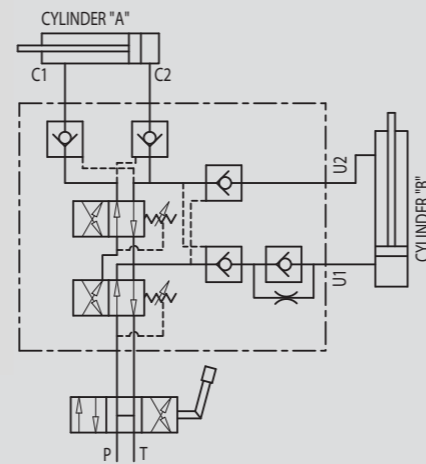
农业机械零配件  
SPARE PARTS & ACCESSORIES FOR AGRICULTURAL MACHINE



# 液压翻转犁用阀块 DOUBLE ACTING PLOUGH OVERTURNING VALVE BY UP MOULDBOARD LOAD SHIFTING

款式/TYPE  
VRAP SV

工作原理图  
HYDRAULIC DIAGRAM



## 使用和操作:

该阀块已实现对翻转犁油缸的应用, 可达到机油的自动回流, 从而液压油缸的翻转运动使犁旋转。该阀块已经研究用于带旋转负载的双油缸运动的设定 (请参考示意图)。

操作说明: 工作顺序: 首先油缸B开始逐步负载; 当油缸B运行到末端, 油缸A开始翻转。当油缸A运行到末端, 油缸A和油缸B同时开始工作, 油缸B的延迟速度与油缸A有关。

## USE AND OPERATION:

This valve has been realised for use on cylinders for reversible plough to obtain the automatic oil backflow and therefore the motion reversal of the hydraulic cylinder that makes the plough rotating. It has been studied to set in action 2 cylinders with advantageous rotation load (see scheme).

**Operating instructions:** sequence working: first cylinder B starts lining up the load; once it got the end stroke, cylinder A starts overturning. When this gets the dead point, A and B start working at the same time, B with a delayed speed in relation to A.

## 材料和特性:

阀体: 镀锌钢  
内件: 淬硬磨光钢  
密封件: 标准丁腈橡胶  
提升方式: 任何渗漏  
这些阀块可提供140巴的交换压力:  
根据需求, 可通过减压阀来修改压力设定值。

## MATERIALS AND FEATURES:

**Body:** zinc-plated steel  
**Internal parts:** hardened and ground steel  
**Seals:** BUNA N standard  
**Poppet type:** any leakage

**These valves are supplied with exchange pressure at 140 Bar: according to your requirements, pressure setting can be modified by acting on the pressure regulator.**

## 应用:

连接C1与油缸A的油口, 连接C2与油缸A的缸体; 连接U1与油缸B的缸体, 连接U2与提升油缸B的油口; 连接P和T到机械输入口。由于其形状, 阀块既可以组装在液压缸上, 也可以通过阀体上的螺纹孔直接固定在犁上。

## APPLICATIONS:

Connect C1 to the stem, C2 to the cylinder's block A, U1 to the block and U2 to the stem of the lining up cylinder's B; P and T to the machine inlet. Thanks to its shape, it can be in-line assembled on a hydraulic cylinder or directly fixed on the plough through the threaded hole made on the body.

编码  
CODE

款式  
TYPE

最大交换压力  
MAX EXCHANGE  
PRESSURE (Bar)

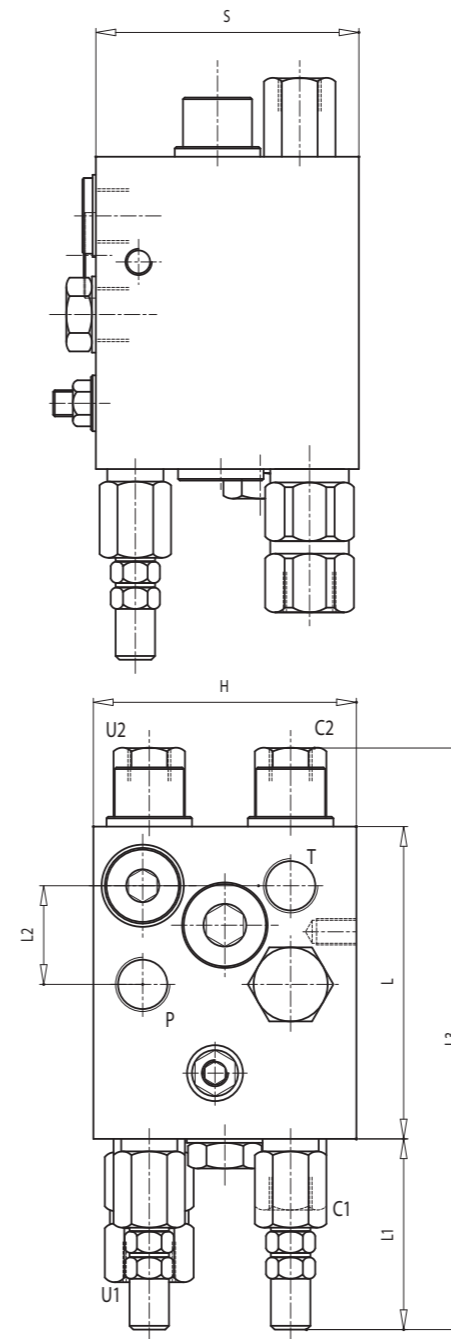
最大压力  
MAX PRESSURE (Bar)

V0340

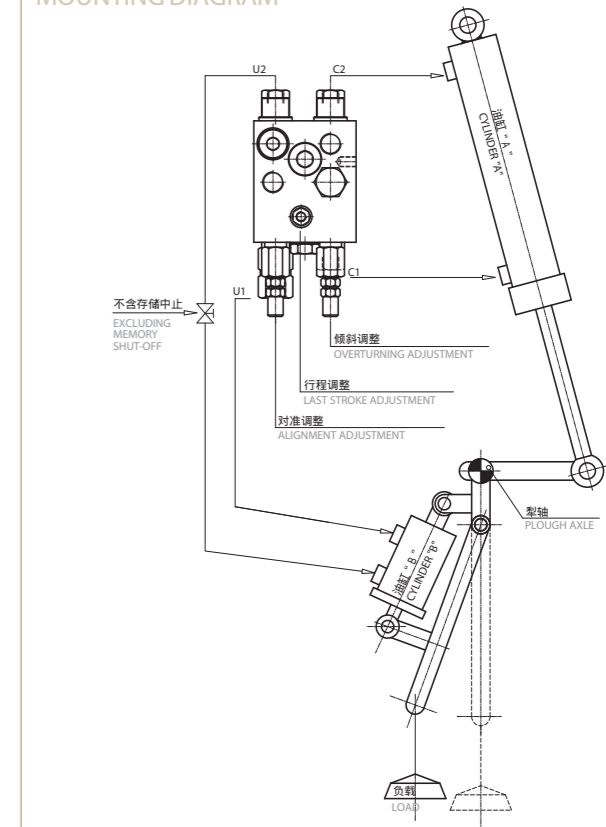
VRAP 80/100 SV TN

230

400



## 安装图 MOUNTING DIAGRAM



编码  
CODE

款式  
TYPE

C1 - C2  
V1 - V2

L

L1

L2

L3

H

S

重量  
WEIGHT

V0340

VRAP 80/100 SV TN

G3/8"

94

58

30

176

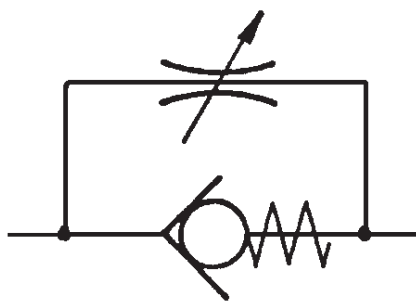
80

80

4,76

## 单向阀

### CLOSING ONE WAY BALL VALVE



功能：单向阀允许在一个方向上的无压流动。针阀限制或封闭回流以调节速度。

*Fuctioning: The free flow is allowed in one direction throgh one -way valve the pin valve limits or closed return flow in order to regulate the speed.*

编码/Ref.	最大压力 (bar)/Max pression (bar)	流量升/Capacity LT	内螺纹/Inner thread
05292	300	20	1/4"
04215	300	45	3/8"
04216	300	70	1/2"



埃马 (上海) 商贸有限公司  
AMA (Shanghai) Trading Co., Ltd.

地址：上海市陕西北路1438号财富时代大厦2019室

电话：+86 21 5178 0125 / 158 2140 8879

传真：+86 21 51780126

网站：www.ama.it www.ama-shanghai.com

电邮：ama-shanghai@ama.it daniel.wang@ama.it